



Nebraska Intelligent Transportation Systems and Operations



100,000+ Assists in 11 Years



Nebraska

- 77,000 square miles
- 10,000 mile state highway system
- 450 mile Interstate-80 Corridor
- 1.8 Million population
- Cities: Omaha (500K); Lincoln (250K); Bellevue (50K); Grand Island (50K)
- 93 counties
- 20 counties with 20K population
- Freight Corridor
- **World's** Busiest Railway Corridor
- Statewide 511
- 50 DMS (I-80)
- 60 RWIS
- Freeway Sensors (Omaha)
- Volunteer Freeway Service Patrol
- Automated Ramp Gates
- MDSS
- CCTV

Expanding Role of Highway Agencies

- Incident Management
- Work Zones
- Weather Management Systems
- Traffic Management and Operations
- Planned Event Management
- Homeland Security
- Alerts
- Multi-State Operations
- Travel Information
- Commercial Vehicles and Freight



Improved Statewide and Multi-State Operations

- Optimize the performance of the transportation system
- Includes system traffic detection –sensors
- Surveillance -cameras
- Coordinated arterial and freeway operations –alternate routing, signal phasing
- Automated work zones
- Road weather management
- Electronic clearance
- Weigh-in-Motion
- Traveler information systems
- Incident Management
- Homeland Security -All Hazards
- Corridor Management
- Multi-State Operations

Road Weather Information Systems



- More than 70 RWIS statewide
- Nearly 50% of traffic delay is weather-related
- Nebraska's 511 system was the first nationwide to deliver 30-mile surface weather reports

Dynamic Message Signs (DMS)



Information Saves Lives
***Dial 511 For Highway Info**

NDOR District 2 Operations Center



District 2 Operations Center



- Need for DOC identified in 1995
- 7 Rural DOCs
- \$1.8 million core and shell
- \$1.2 Million ITS finish
- Omaha DOC has 8,000 square feet
- Co-location with NSP Troop A Dispatch

Safe, Quick Clearance



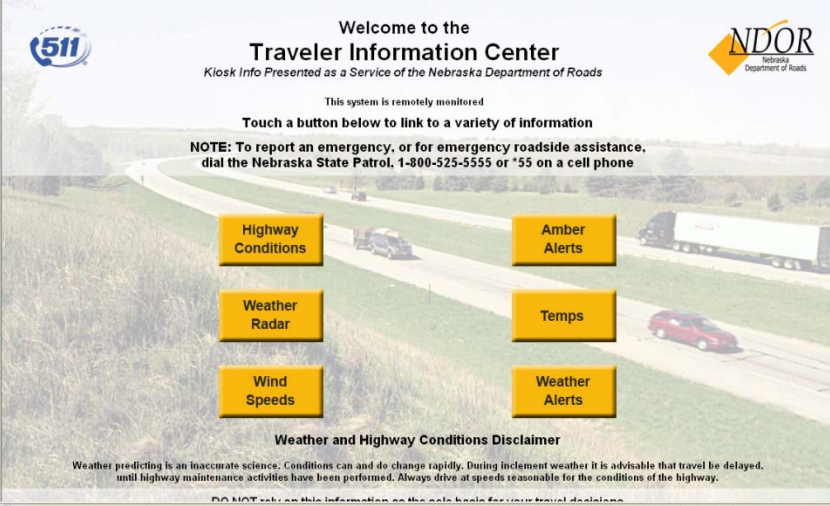


Travel Information



NDOR Kiosk - Microsoft Internet Explorer

File Edit View Favorites Tools Help

Address http://www2.dor.state.ne.us/kiosk/



Welcome to the
Travel Information Center
Kiosk Info Presented as a Service of the Nebraska Department of Roads

This system is remotely monitored

Touch a button below to link to a variety of information

NOTE: To report an emergency, or for emergency roadside assistance, dial the Nebraska State Patrol, 1-800-525-5555 or *55 on a cell phone

Highway Conditions Amber Alerts

Weather Radar Temps

Wind Speeds Weather Alerts

Weather and Highway Conditions Disclaimer

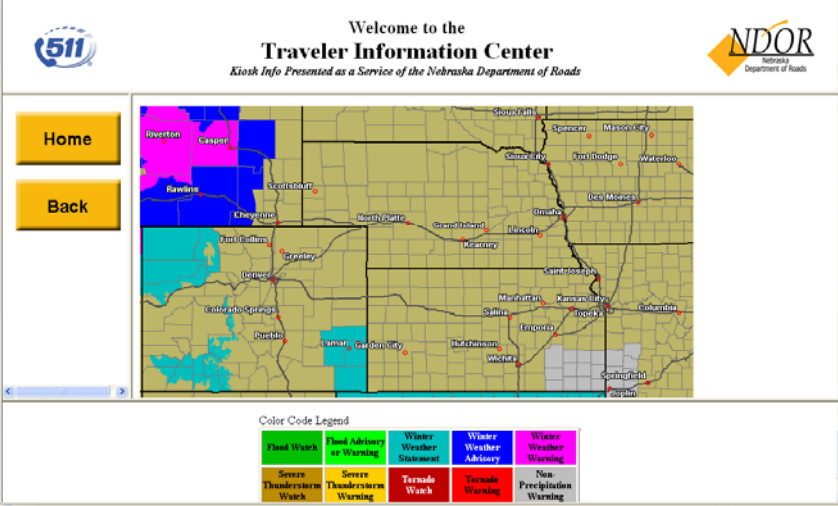
Weather predicting is an inaccurate science. Conditions can and do change rapidly. During inclement weather it is advisable that travel be delayed, until highway maintenance activities have been performed. Always drive at speeds reasonable for the conditions of the highway.

DO NOT rely on this information as the sole basis for your travel decisions.



http://www2.dor.state.ne.us/kiosk/AlertFrame.html - Microsoft Internet Explorer

File Edit View Favorites Tools Help

Address http://www2.dor.state.ne.us/kiosk/AlertFrame.html

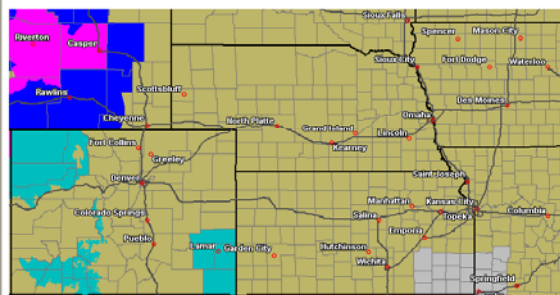


Welcome to the
Travel Information Center
Kiosk Info Presented as a Service of the Nebraska Department of Roads

Home

Back



Color Code Legend

Flood Watch	Flood Advisory or Warning	Winter Weather Statement	Winter Weather Advisory	Winter Weather Warning
Severe Thunderstorm Watch	Severe Thunderstorm Warning	Tornado Watch	Tornado Warning	Non-Precipitation Warning

Traveler Information Portal

Nebraska Department Of Roads - Microsoft Internet Explorer

File Edit View Favorites Tools Help

Address <http://www.511nebraska.org/ndotip/index.jsp> Go Links >>

Official Nebraska Government Website

Nebraska Department of Roads

Traveler Information Portal

Date updated
Apr 06, 2006
09:29 AM

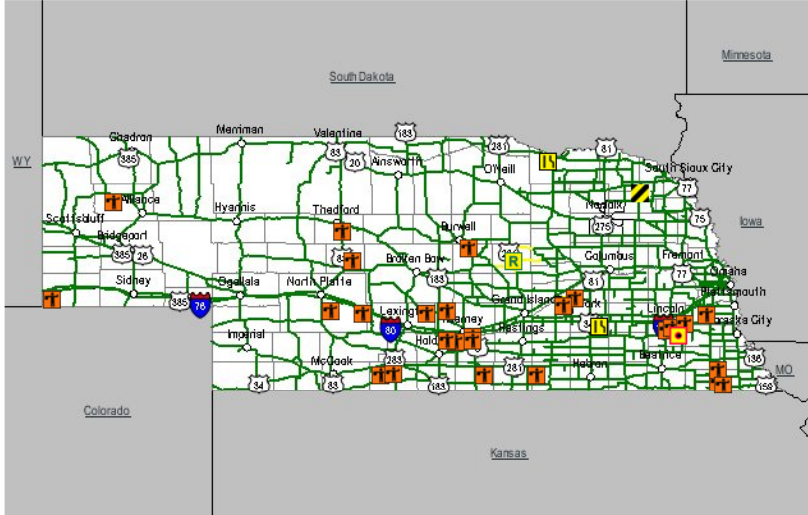
TIP HOME Text Version Cameras Weather Motor Carriers Contact Us What is 511? NDOR Home

Click Map to ZOOM one level -- Click icons on Map for Details -- Scroll for Text Version

Current Map View:
Statewide

Select to View

- View All Icons
- View No Icons
- Incident/Accident
- Closure
- Lane Restriction
- Traffic Congestion
- Obstruction Hazard
- Delays
- Construction
- Events/Info
- Road Conditions



AMBER ALERT

Legend:
Normal Seasonal Caution Extreme Caution Closed No Report

All Statewide Items - Printable Version

Internet

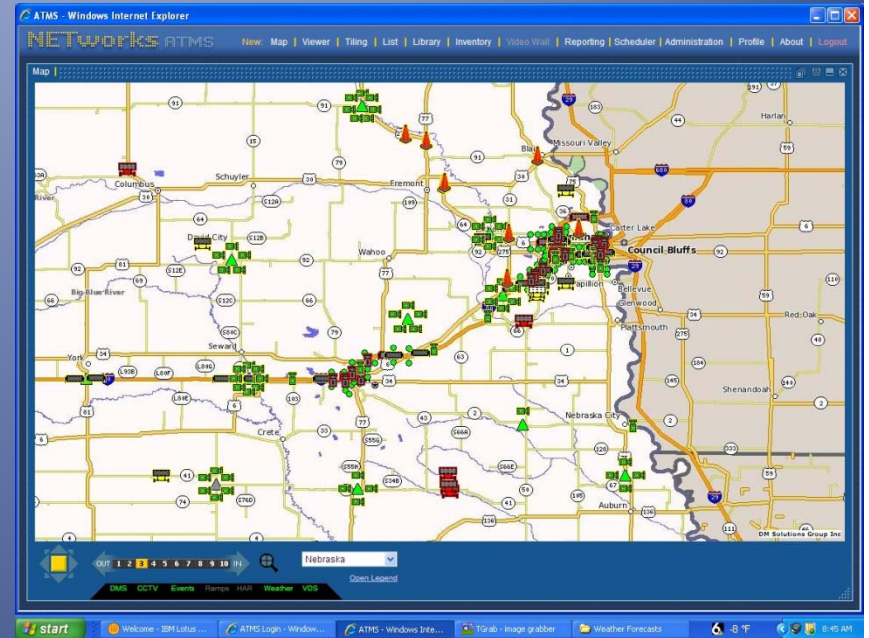
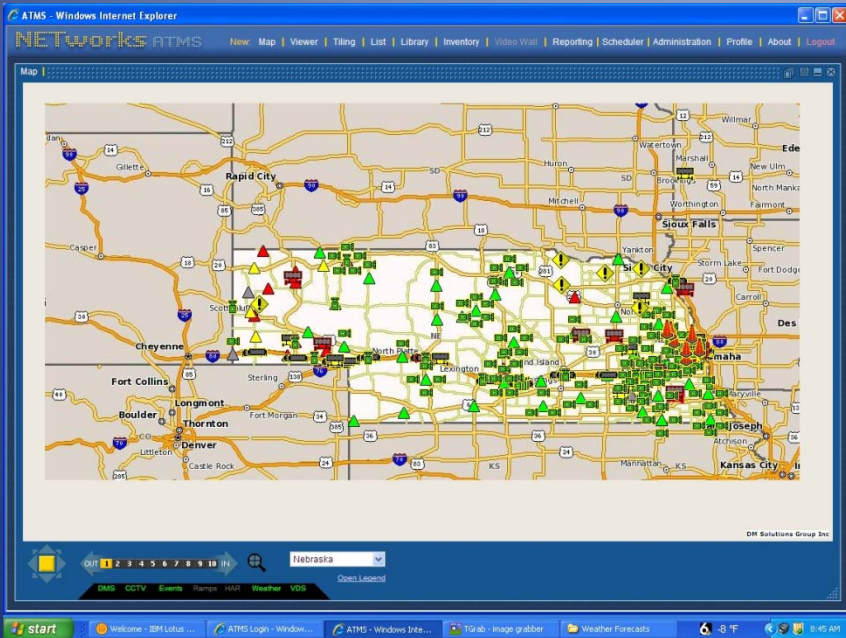
Rural DOCs



Rural Operations



Distributed Field Devices



Commercial Vehicle Operations



Cameras, Sensors and Automated Ramp Gates



I-80 at Missouri River



Low Tech Travel Information



Interstate-80 Winter Operations Coalition

Jim McGee MPA

Jim.McGee@Nebraska.gov

402-610-0074

October 26-27, 2010

Reno, Nevada